

**OPERATIONAL CONTINUITY
OF THE
DRINKING WATER
PLANT**

LISTUGUJ



FOR ASSISTANCE CALL

MARC LEMAY

418-882-7358

PRINCIPLE OF OPERATION

- There is one (1) well containing two pumps that supplies raw water to the reservoirs.
- The well pumps are on automatic and will come on when needed. However, you turn them on manually if necessary.

ON AUTOMATIC

- The well pump starts and stops depending on the level in the reservoirs.
- The well pump comes on when the level in the reservoirs reaches (while emptying) 12,5 ft. The well pump shuts off when the level in reservoirs reaches (while filling) 12,75 ft
- There are two ways to monitor the level in the reservoirs

- on the computer (photo 1)

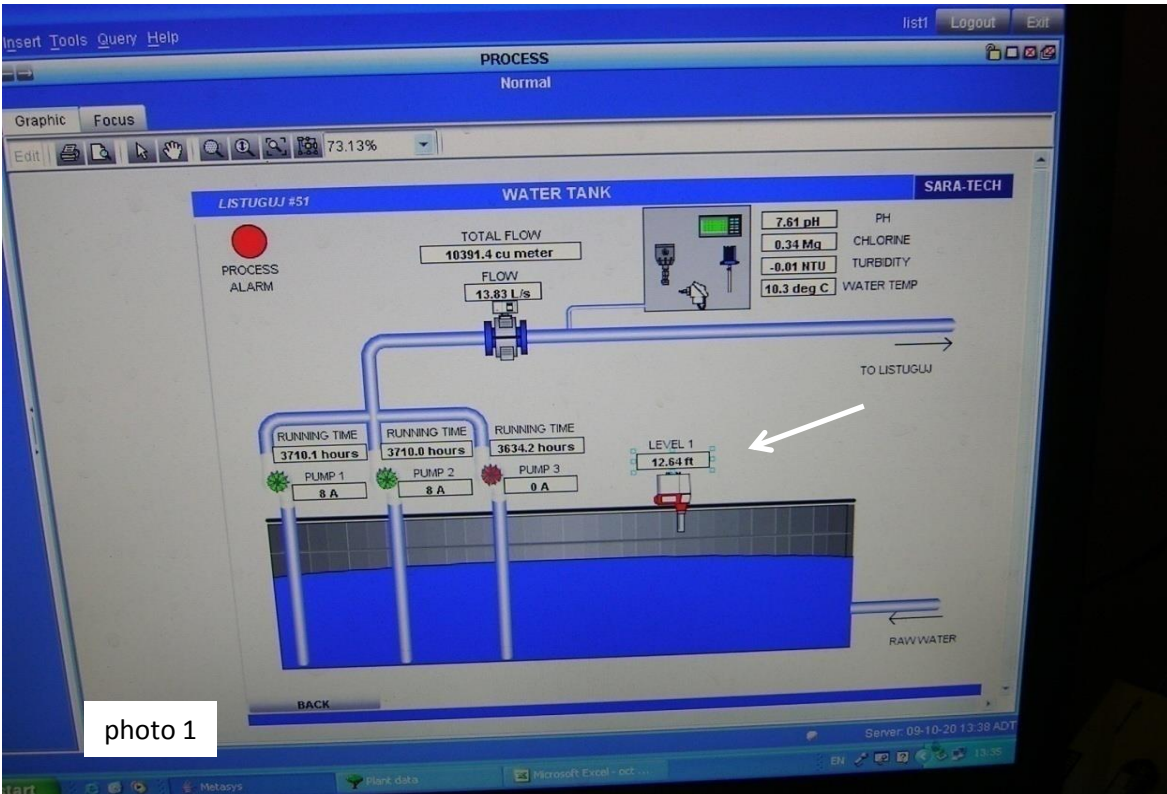


photo 1

- on read out situated on the west wall (photo 2)



photo 2

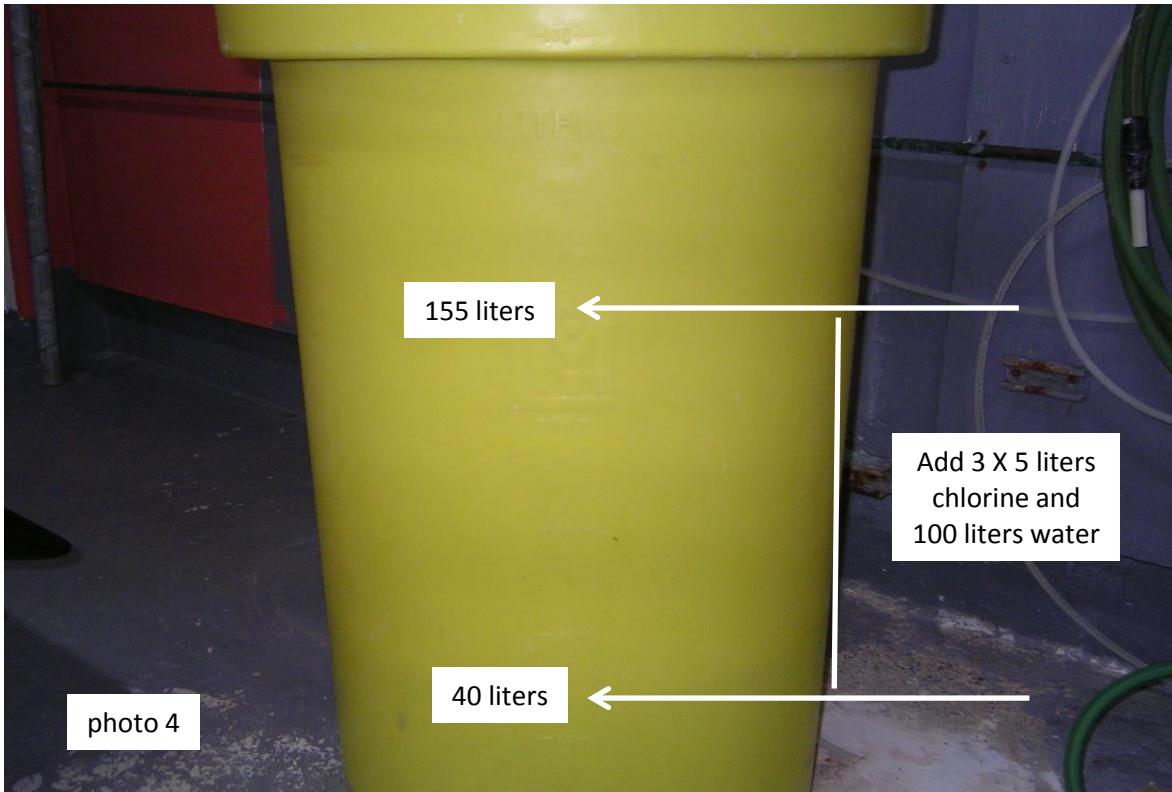
- The chlorine pump only works when the well pump is on (photo 3)

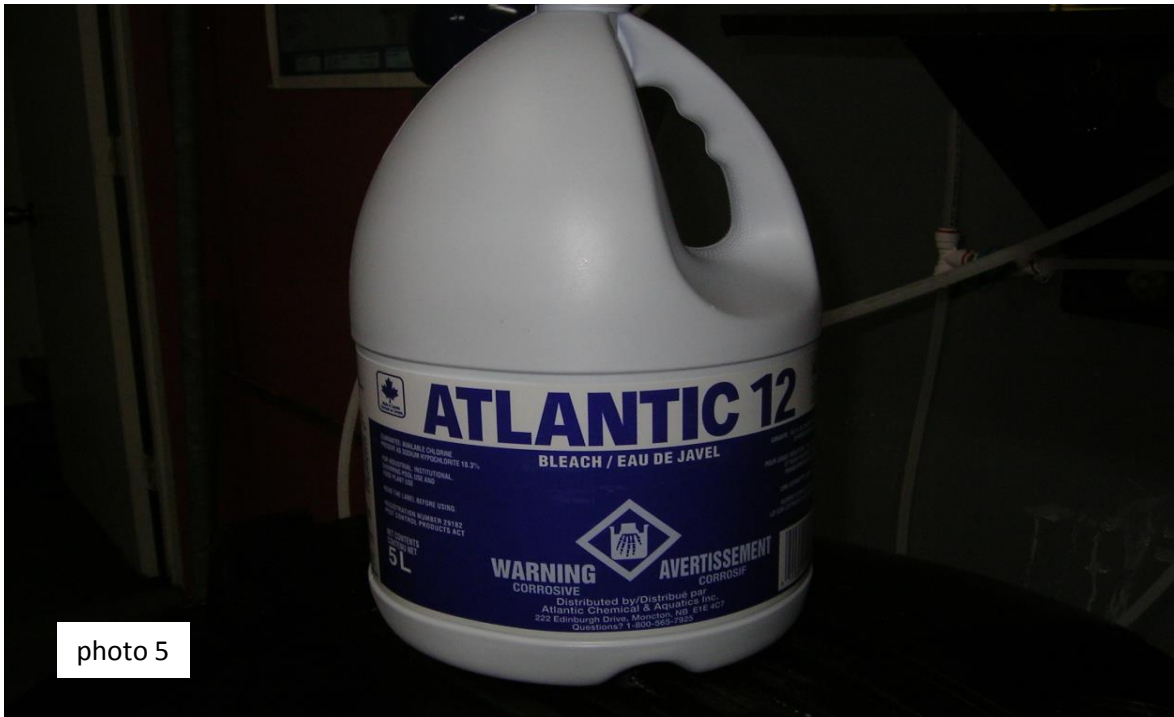


***IF THE CHLORINE PUMP IS NOT WORKING
YOU MUST IMPLEMENT A BOIL WATER
ADVISORY AND COMMUNICATE THIS
SITUATION THROUGHOUT THE COMMUNITY***

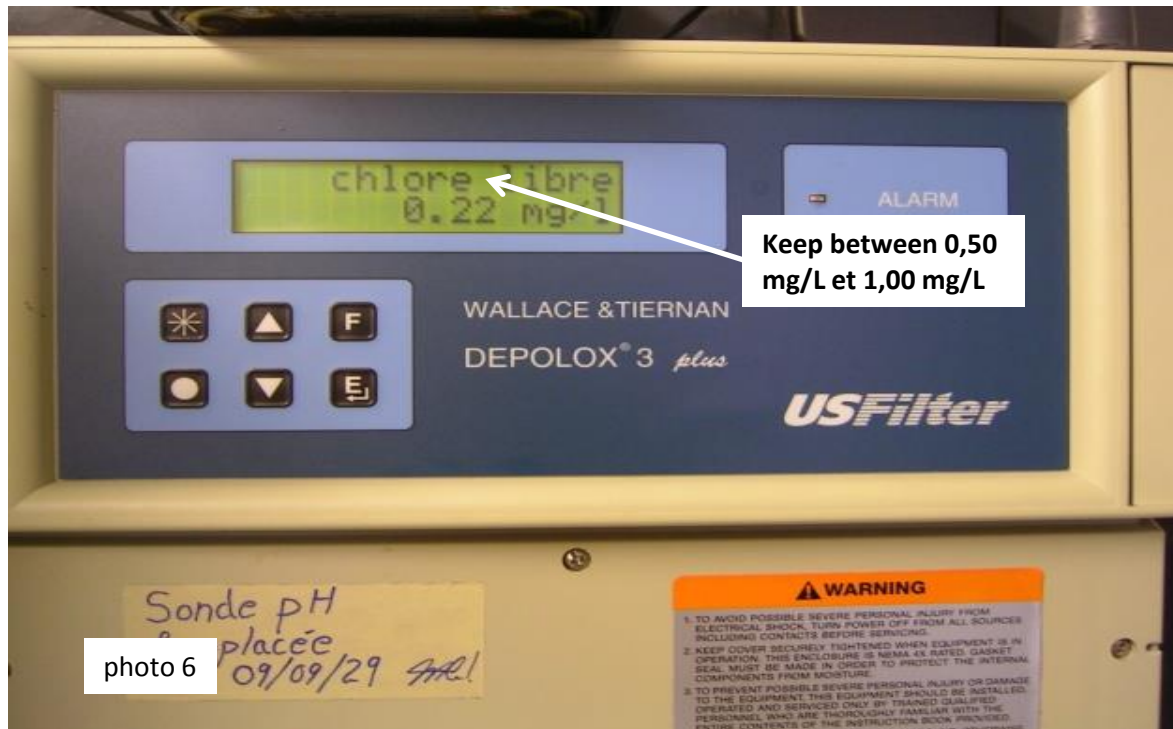
WARNING ! GLOVES, EYE PROTECTION AND A RUBBER BIB MUST BE WORN WHILE HANDLING CHLORINE

- When the level in the chlorine tank reaches 40 liters (photo 4) you must make a new batch. Add three (3) 5 liters jugs (photo 5), then add 100 liters of water.





- You must keep the residual chlorine concentration between 0,50 mg/L and 1,00 mg/L.
- You can read the concentration on the "Depolox" situated in front of the entry doorway (photo 6)



- To adjust the chlorine concentration, increase the speed of the chlorine pump (photo 7) if the concentration is too low and decrease if too high. Make small adjustments (around 5 %). It takes at least 12 hours for the adjustment to take effect, so make one adjustment per day



FOR ASSISTANCE CALL

MARC LEMAY

418-882-7358